

Test Report

No. : CE/2015/94217

Date : 2015/09/24

Page : 1 of 6

MS-ADELL CO., LTD.

2-1-12 HAMAMATSU-CHOU MINATO-KU TOKYO, JAPAN



The following sample(s) was/were submitted and identified by/on behalf of the applicant as :

Sample Description : OPTOKLEB UT20
Sample Receiving Date : 2015/09/18
Testing Period : 2015/09/18 TO 2015/09/24



Test Requested

- (1) As specified by client, with reference to RoHS 2011/65/EU Annex II and amending Directive (EU) 2015/863 to determine DBP, BBP, DEHP, DIBP contents in the submitted sample.
- (2) As specified by client, to test Halogen-Chlorine, Bromine , DIDP, DINP, DNOP contents in the submitted sample.
- (3) Please refer to next pages for the other item(s).

Test Result(s) : Please refer to next page(s).

Conclusion

- (1) Based on the performed tests on submitted samples, the test results of DBP, BBP, DEHP, DIBP comply with the limits as set by RoHS and amending Directive (EU) 2015/863.



Troy Chang, Manager - Tech
Signed for and on behalf of
SGS TAIWAN LTD.
Chemical Laboratory - Taipei

This document is issued by the Company subject to its General Conditions of Service printed overleaf, available on request or accessible at <http://www.sgs.com/en/Terms-and-Conditions.aspx> and, for electronic format documents, subject to Terms and Conditions for Electronic Documents at <http://www.sgs.com/en/Terms-and-Conditions/Termse-Document.aspx>. Attention is drawn to the limitation of liability, indemnification and jurisdiction issues defined therein. Any holder of this document is advised that information contained hereon reflects the Company's findings at the time of its intervention only and within the limits of client's instruction, if any. The Company's sole responsibility is to its Client and this document does not exonerate parties to a transaction from exercising all their rights and obligations under the transaction documents. This document cannot be reproduced, except in full, without prior written approval of the Company. Any unauthorized alteration, forgery or falsification of the content or appearance of this document is unlawful and offenders may be prosecuted to the fullest extent of the law. Unless otherwise stated the results shown in this test report refer only to the sample(s) tested.

Test Report

No. : CE/2015/94217

Date : 2015/09/24

Page : 2 of 6

MS-ADELL CO., LTD.

2-1-12 HAMAMATSU-CHOU MINATO-KU TOKYO, JAPAN



Test Result(s)

PART NAME No.1 : TRANSPARENT LIQUID

| Test Item(s) | Unit | Method | MDL | Result | Limit |
|--|------|--|-------|--------|-------|
| | | | | No.1 | |
| BBP (Butyl Benzyl phthalate) (CAS No.: 85-68-7) | % | With reference to EN 14372. Analysis was performed by GC/MS. | 0.003 | n.d. | 0.1 |
| DBP (Dibutyl phthalate) (CAS No.: 84-74-2) | % | With reference to EN 14372. Analysis was performed by GC/MS. | 0.003 | n.d. | 0.1 |
| DEHP (Di- (2-ethylhexyl) phthalate) (CAS No.: 117-81-7) | % | With reference to EN 14372. Analysis was performed by GC/MS. | 0.003 | n.d. | 0.1 |
| DIBP (Di-isobutyl phthalate) (CAS No.: 84-69-5) | % | With reference to EN 14372. Analysis was performed by GC/MS. | 0.003 | n.d. | 0.1 |
| DIDP (Di-isodecyl phthalate) (CAS No.: 26761-40-0; 68515-49-1) | % | With reference to EN 14372. Analysis was performed by GC/MS. | 0.01 | n.d. | - |
| DINP (Di-isononyl phthalate) (CAS No.: 28553-12-0; 68515-48-0) | % | With reference to EN 14372. Analysis was performed by GC/MS. | 0.01 | n.d. | - |
| DNOP (Di-n-octyl phthalate) (CAS No.: 117-84-0) | % | With reference to EN 14372. Analysis was performed by GC/MS. | 0.003 | n.d. | - |
| DMP (Di-methyl phthalate) (CAS No.: 131-11-3) | % | With reference to EN 14372. Analysis was performed by GC/MS. | 0.003 | n.d. | - |
| DPrP (Di-propyl phthalate) (CAS No.: 131-16-8) | % | With reference to EN 14372. Analysis was performed by GC/MS. | 0.003 | n.d. | - |
| DCHP (Di-cyclohexyl phthalate) (CAS No.: 84-61-7) | % | With reference to EN 14372. Analysis was performed by GC/MS. | 0.003 | n.d. | - |
| DEP (Di-ethyl phthalate) (CAS No.: 84-66-2) | % | With reference to EN 14372. Analysis was performed by GC/MS. | 0.003 | n.d. | - |
| DIOP (Di-isooctyl phthalate) (CAS No.: 27554-26-3) | % | With reference to EN 14372. Analysis was performed by GC/MS. | 0.01 | n.d. | - |
| DNNP (Di-n-nonyl phthalate) (DNP) (CAS No.: 84-76-4) | % | With reference to EN 14372. Analysis was performed by GC/MS. | 0.003 | n.d. | - |
| DEHA (Di-2-ethylhexyl adipate) (CAS No.: 103-23-1) | % | With reference to EN 14372. Analysis was performed by GC/MS. | 0.003 | n.d. | - |
| Di-n-pentyl phthalate (CAS No.: 131-18-0) | % | With reference to EN 14372. Analysis was performed by GC/MS. | 0.003 | n.d. | - |
| DNHP (Di-n-hexyl phthalate) (CAS No.: 84-75-3) | % | With reference to EN 14372. Analysis was performed by GC/MS. | 0.003 | n.d. | - |

This document is issued by the Company subject to its General Conditions of Service printed overleaf, available on request or accessible at <http://www.sgs.com/en/Terms-and-Conditions.aspx> and, for electronic format documents, subject to Terms and Conditions for Electronic Documents at <http://www.sgs.com/en/Terms-and-Conditions/Termse-Document.aspx>. Attention is drawn to the limitation of liability, indemnification and jurisdiction issues defined therein. Any holder of this document is advised that information contained hereon reflects the Company's findings at the time of its intervention only and within the limits of client's instruction, if any. The Company's sole responsibility is to its Client and this document does not exonerate parties to a transaction from exercising all their rights and obligations under the transaction documents. This document cannot be reproduced, except in full, without prior written approval of the Company. Any unauthorized alteration, forgery or falsification of the content or appearance of this document is unlawful and offenders may be prosecuted to the fullest extent of the law. Unless otherwise stated the results shown in this test report refer only to the sample(s) tested.

Test Report

No. : CE/2015/94217

Date : 2015/09/24

Page : 3 of 6

MS-ADELL CO., LTD.

2-1-12 HAMAMATSU-CHOU MINATO-KU TOKYO, JAPAN



| Test Item(s) | Unit | Method | MDL | Result | Limit |
|--|-------|--|-----|--------|-------|
| | | | | No.1 | |
| Halogen-Chlorine (Cl) (CAS No.: 22537-15-1) | mg/kg | With reference to BS EN 14582:2007. Analysis was performed by IC. | 50 | n.d. | - |
| Halogen-Bromine (Br) (CAS No.: 10097-32-2) | mg/kg | With reference to BS EN 14582:2007. Analysis was performed by IC. | 50 | n.d. | - |

Note :

1. mg/kg = ppm ; 0.1wt% = 1000ppm
2. n.d. = Not Detected
3. MDL = Method Detection Limit
4. " - " = Not Regulated

This document is issued by the Company subject to its General Conditions of Service printed overleaf, available on request or accessible at <http://www.sgs.com/en/Terms-and-Conditions.aspx> and, for electronic format documents, subject to Terms and Conditions for Electronic Documents at <http://www.sgs.com/en/Terms-and-Conditions/Termse-Documents.aspx>. Attention is drawn to the limitation of liability, indemnification and jurisdiction issues defined therein. Any holder of this document is advised that information contained hereon reflects the Company's findings at the time of its intervention only and within the limits of client's instruction, if any. The Company's sole responsibility is to its Client and this document does not exonerate parties to a transaction from exercising all their rights and obligations under the transaction documents. This document cannot be reproduced, except in full, without prior written approval of the Company. Any unauthorized alteration, forgery or falsification of the content or appearance of this document is unlawful and offenders may be prosecuted to the fullest extent of the law. Unless otherwise stated the results shown in this test report refer only to the sample(s) tested.

MS-ADELL CO., LTD.

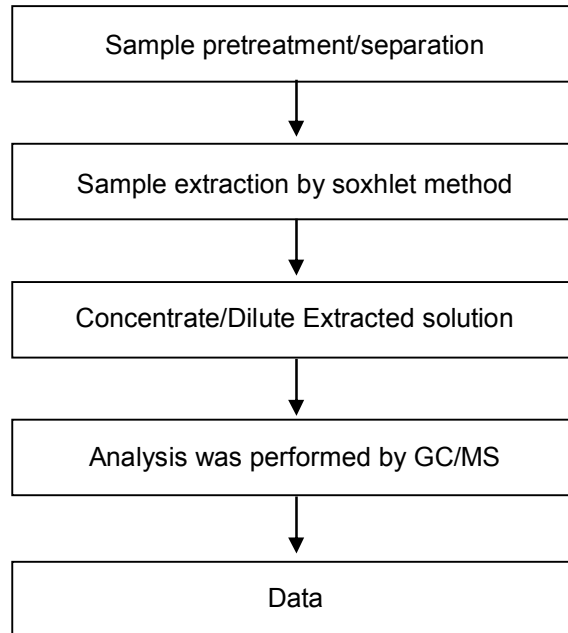
2-1-12 HAMAMATSU-CHOU MINATO-KU TOKYO, JAPAN



Analytical flow chart of phthalate content

- Name of the person who made measurement: Roman Wong
- Name of the person in charge of measurement: Troy Chang

【Test method: EN 14372】



This document is issued by the Company subject to its General Conditions of Service printed overleaf, available on request or accessible at <http://www.sgs.com/en/Terms-and-Conditions.aspx> and, for electronic format documents, subject to Terms and Conditions for Electronic Documents at <http://www.sgs.com/en/Terms-and-Conditions/Termse-Documents.aspx>. Attention is drawn to the limitation of liability, indemnification and jurisdiction issues defined therein. Any holder of this document is advised that information contained hereon reflects the Company's findings at the time of its intervention only and within the limits of client's instruction, if any. The Company's sole responsibility is to its Client and this document does not exonerate parties to a transaction from exercising all their rights and obligations under the transaction documents. This document cannot be reproduced, except in full, without prior written approval of the Company. Any unauthorized alteration, forgery or falsification of the content or appearance of this document is unlawful and offenders may be prosecuted to the fullest extent of the law. Unless otherwise stated the results shown in this test report refer only to the sample(s) tested.

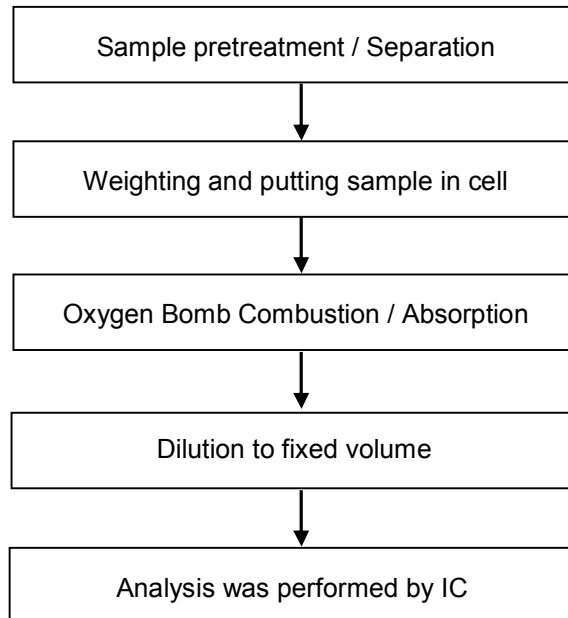
MS-ADELL CO., LTD.

2-1-12 HAMAMATSU-CHOU MINATO-KU TOKYO, JAPAN



Analytical flow chart of halogen content

- Name of the person who made measurement: Rita Chen
- Name of the person in charge of measurement: Troy Chang



This document is issued by the Company subject to its General Conditions of Service printed overleaf, available on request or accessible at <http://www.sgs.com/en/Terms-and-Conditions.aspx> and, for electronic format documents, subject to Terms and Conditions for Electronic Documents at <http://www.sgs.com/en/Terms-and-Conditions/Termse-Documents.aspx>. Attention is drawn to the limitation of liability, indemnification and jurisdiction issues defined therein. Any holder of this document is advised that information contained hereon reflects the Company's findings at the time of its intervention only and within the limits of client's instruction, if any. The Company's sole responsibility is to its Client and this document does not exonerate parties to a transaction from exercising all their rights and obligations under the transaction documents. This document cannot be reproduced, except in full, without prior written approval of the Company. Any unauthorized alteration, forgery or falsification of the content or appearance of this document is unlawful and offenders may be prosecuted to the fullest extent of the law. Unless otherwise stated the results shown in this test report refer only to the sample(s) tested.

Test Report

No. : CE/2015/94217

Date : 2015/09/24

Page : 6 of 6

MS-ADELL CO., LTD.

2-1-12 HAMAMATSU-CHOU MINATO-KU TOKYO, JAPAN



* The tested sample / part is marked by an arrow if it's shown on the photo. *

CE/2015/94217



** End of Report **

This document is issued by the Company subject to its General Conditions of Service printed overleaf, available on request or accessible at <http://www.sgs.com/en/Terms-and-Conditions.aspx> and, for electronic format documents, subject to Terms and Conditions for Electronic Documents at <http://www.sgs.com/en/Terms-and-Conditions/Termse-Document.aspx>. Attention is drawn to the limitation of liability, indemnification and jurisdiction issues defined therein. Any holder of this document is advised that information contained hereon reflects the Company's findings at the time of its intervention only and within the limits of client's instruction, if any. The Company's sole responsibility is to its Client and this document does not exonerate parties to a transaction from exercising all their rights and obligations under the transaction documents. This document cannot be reproduced, except in full, without prior written approval of the Company. Any unauthorized alteration, forgery or falsification of the content or appearance of this document is unlawful and offenders may be prosecuted to the fullest extent of the law. Unless otherwise stated the results shown in this test report refer only to the sample(s) tested.